



GOVERNMENT OF BERMUDA
Ministry of Public Works and Environment
Department of Works and Engineering

September 8, 2025

Dear Proponents,

Ref: 41-113-120 Retaining Wall Reconstruction South Rd Smiths

This Addendum #1 contains (3) pages including this front page.

The following addendum supersedes information contained in the RFQ to the extent referenced.

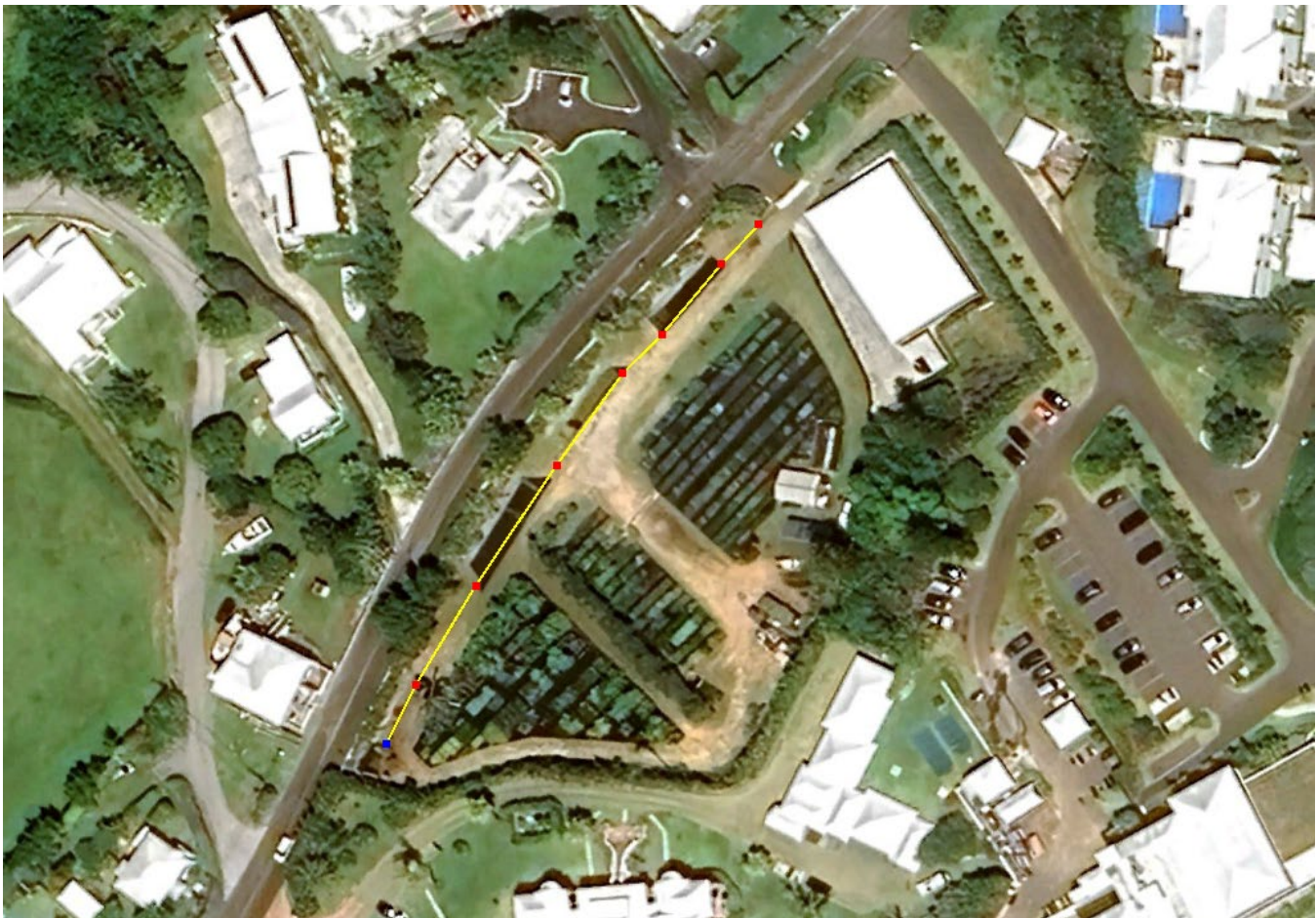
This addendum forms part of the RFQ documents and will be subject to all of the conditions set out in the contract.

PART 1 – Clarifications and Revisions

- It is recognized that the schedule requirements in the tender documents are ambitious. This comes from the desire to minimize disruption to hotel operations. Recognizing the value of a compressed schedule, please include an achievable schedule with your submission. Govt will then take this to the hotel and renegotiate/managing expectations.

So long as access to the hotel is maintained, there will be no penalties to the contractor for disruption to hotel operations if the schedule is exceeded. The contractor should make all reasonable efforts to deliver on the schedule, but we recognize that construction has inherent unpredictability.

- Boundary Fence: Contractors should allow for the installation of a 315ft long 6ft chainlink fence (or similar) to separate the work site from the nursery operations. A minimum of 10ft access road to the nursery grounds should be maintained at all times. The contractor is not to store materials, tools etc on the nursery grounds. All waste must be disposed of off site; dumpsters belonging to the nursery and hotel may not be used.



Approx. fence alignment

END OF PART 1

PART 2 – Questions from Proponents

1. Q) If we are required to purchase asphalt from Government, what is the price?

A) See below

2. Q) Instead of purchasing asphalt from the Government and then charging it back to the project, can we simply exclude it from our pricings and have Government supply the project for 'free'?

A) Yes, this will be the preferred approach. Please provide approx. 1 week notice for the batch plant, and tickets will be billed directly to the project rather than to the contractor. Assume to repave the full length, full lane width.

3. Q) There is a line in the price schedule for manual traffic control. Would lights be acceptable?

A) Yes, automatic lights would be better than manual traffic control. There is no need to provide manual control, even at peak times. Pricing schedule revised to reflect this.

4. Q) It is noted that limestone block should be saved for re-use. There may be a lot of good stone coming out of that wall; where can we stockpile all of it?

A) Contractors may call to have it collected regularly as the demolition progresses, so we needn't stockpile more than a couple truckloads of material at a time. Government will provide pallets for the stacking and transport of stone.

END OF PART 2